

07

**The cotton-top tamarin
(Saguinus oedipus)**

is a small primate but its ecological importance is immense. Its distinctive white mane and its social behavior make it unmistakable within its habitat. In the areas of influence of both Promigas and our Estelar Hotel in Cartagena, the cotton-top tamarin's presence is a reminder of the region's natural wealth and the importance of protecting the forests this species still inhabits.

[Learn more here](#)



Committed to protecting and regenerating to ensure a resilient environment

07.1	Efficiency in the use of natural resources	67
07.2	Mitigation of and adaptation to climate change	72
07.3	Biodiversity and business	76

07.1 Efficiency in the use of natural resources

[GRI 3-3] [GRI 302-4] [GRI 303-4] [GRI 303-5] [GRI 306-2] [GRI 306-3]

APPROACH TO RISKS, OPPORTUNITIES AND STRATEGY

[GRI 3-3]

In addition to help us to reduce costs and minimize environmental liabilities, the efficiency in the use of resources and the circular economy principles also enhance our competitiveness and prepare us to adapt to future regulations. Efficient waste management processes enable us to decrease the environmental and social impacts while improving our positioning and addressing the expectations of our stakeholders. Water scarcity is a key risk, which is why evaluating our consumption and exposure to hydrological risks allows us to optimize costs and anticipate emerging regulations. Integrating strategies to ensure a positive environmental impact is fundamental to being able to mitigate risks, optimize our resources and strengthen the sustainability of our business.

Through the investment in innovation, the implementation of sustainable solutions and the collaboration with key actors, Corfi works toward a development model that prioritizes both efficiency and sustainability. We promote and fund the energy transition, as well as the energy efficiency programs, and we also guarantee energy security for the populations of Colombia and Peru. Moreover, we optimize water resource management and strengthen the circular economy.

By means of integrated strategies, we focus on reducing the environmental impacts, improving our competitiveness and anticipating regulatory challenges, thus ensuring sustainable and responsible growth. Both in our investments and through Fundación Corficolombiana, we work collaboratively with our suppliers on incorporating, developing and encouraging innovation in sustainable solutions, promoting the development of efficient goods and services in terms of the use of natural resources and aligned with our commitment to producing positive environmental, social and economic impacts.

One of the tools we use to this effect is the #CorfiSostenible Award and the Supplier Academy Program, which we support through Fundación Corfi.

MAIN PROGRESS ACHIEVEMENTS REGARDING THE CORFISOSTENIBLE STRATEGY GOALS

[GRI 3-3]

STRATEGIC APPROACH AND GOALS

Fostering a circular economy through the reduction, recirculation and recycling of waste.

MAIN PROGRESS ACHIEVEMENTS

- In Covimar, we deployed a project focused on utilizing recovered materials from infrastructure assets undergoing renovation processes, including doors, toilets and windows, with the purpose of improving the infrastructural conditions of 17 education institutions.
- In Hoteles Estelar, we implemented a comprehensive composting and recycling program centered on the sustainable management of organic and plastic waste, achieving a utilization rate of 53.1% for these materials.

[GRI 306-3]

STRATEGIC APPROACH AND GOALS

Driving the transition toward a more efficient and sustainable energy system.

MAIN PROGRESS ACHIEVEMENTS

- Through Promigas, we enhance the energy offer with 91.7 MW in solar capacity and 48.1 MW in self- and cogeneration, thus promoting sustainable solutions for its customers and the Country.
- Promigas and its affiliate companies encourage the adoption of sustainable technology in the industry with projects such as the 2.3-MW solar park for Lamitech and the 6.5-MW trigeneration for Unibol.
- We also connected 400,000 new natural gas and electrical energy customers.
- With the 'Brilla' Program deployed by Promigas, we continued promoting energy efficiency in thousands of Colombian households.
- Through Coviandina, we replaced sodium-based lighting with LED devices in tunnels. This action allowed achieving yearly savings of 153,124 kWh.
- At Unipalma, we implemented an energy cogeneration system based on biogas harnessed from industrial waste, generating up to 634 kWh and enabling the company to operate with 85% renewable energy.
- Hoteles Estelar implemented energy optimization projects, including the advanced control of freezing water plants, overhauling of chillers and replacement of boilers, enabling the company to achieve a reduction of 270,000 kWh per year.

[GRI 302-4]

Ensuring efficient and sustainable management of water resources through consumption optimization, water reutilization and the adoption of resource saving technology.

MAIN PROGRESS ACHIEVEMENTS

- In our companies Covipacifico, Covian-des and Pisa, we implemented comprehensive water management plans, incorporating reuse strategies, leak fixing, and rainwater catchment, storage and utilization. These actions enabled the infrastructure portfolio to reduce water consumption by 33.7%.
- At Panamericana, we implemented a wastewater treatment plant (WWTP) with an investment of COP 320 million, thus reducing potable water consumption and enhancing the company's operational resilience.
- At Pajonales, we optimized the irrigation operation using high-efficiency sprinklers and soil monitoring maps, achieving a 22% increase in rice productivity.
- Mavalle reutilized 50% of the water from the industrial processes, thus getting aligned with the environmental regulations currently in force.
- In Hoteles Estelar, we made progress in the replacement of toilets and faucets with low-consumption models. These actions have contributed to the 9.5% net reduction in the hotel chain's water consumption.

[GRI 303-4]

PROGRESS DETAILS REGARDING THE CORFISOSTENIBLE STRATEGY

[GRI 3-3]

DRIVING ENERGY EFFICIENCY AND SUSTAINABILITY

[GRI 302-4]

In 2024, we consolidated important progress in our energy efficiency and sustainability strategy while remaining aligned with our commitment to the transition to clean energies.

Over the year, our investments and projects have built up the use of renewables, the reduction in energy consumption and the optimization of the infrastructure with the aim of improving the efficiency of our processes and services. Thanks to these efforts, we have been able to increase the installed renewable energy capacity for our clients and to expand the access to sustainable energy sources to more households and companies in Colombia through our Energy and gas investments in both Colombia and Peru.

In 2024, through Promigas and in collaboration with Fundación Promigas and Inclusión S. A. S., we strengthened the Multidimensional Energy Poverty Index (MEPI), a pioneer tool in Colombia that measures the relationship between the access to energy and human well-being. The second edition of the MEPI, which now features a municipal and departmental scope, allows identifying gaps in terms of access, quality and use of energy, thus guiding strategies centered on eradicating energy poverty and promoting the access to natural gas and to basic devices in the most vulnerable households.

In our agribusiness investments, we have implemented biogas-fueled cogeneration systems that enable us to operate with a higher ratio of renewable energy. As for the road infrastructure, we have developed energy efficiency projects, such as the retrofitting of tunnel lighting and the incorporation of electric mobility, thus improving the transport sustainability. In the context of our Hotels, we have boosted the operation efficiency by optimizing air-conditioning systems, overhauling high-energy-demand equipment and adopting electricity-saving technology. Additionally, in the financial and corporate scenario, we have strengthened the programs centered on investing in renewables and acknowledged innovative initiatives related to environmental sustainability.

Within the framework of our involvement in key events of the energy sector, we participated in the “Desafío de la Energía 2024” (Energy Challenge 2024), which is organized by Prisa Media. In this event, our Vice President of Investments, Alejandro Sánchez, underscored the importance

of maintaining the support to strategies that foster the energy transition, establishing it as one of the most feasible solutions for addressing the growing increase in the country’s energy demand. The event gathered more than thirty sector experts, who shared their knowledge and experience in the current and future challenges in terms of energy portfolio diversification and its efficient integration with the national grid.

In 2024, the total energy consumption within the Organization stood at 581,406 MWh, 11.2% of which is sourced from renewable sources, thus reflecting the positive impact of our investments in clean energy.

Promigas’s ‘Brilla’ Program is a non-bank finance initiative created in 2007 to facilitate the access to credit for low-income households in Colombia. This program enables the users to acquire essential products and services, such as materials for home improvements, energy-efficient household appliances and education solutions, thus improving their quality of life. Through ‘Brilla,’ we have benefited more than 775,000 active clients, granting an accrued total of COP 8.4 trillion in credit since its creation. Moreover, in December 2024 and through Promigas, we issued social bonds amounting to COP 540 billion to reinforce and expand this program. This action reasserts our commitment to financial inclusion and sustainable development in vulnerable communities.

[SDG 9.4]

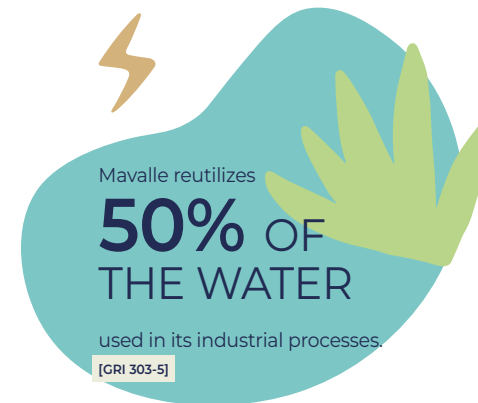
EXPANSION OF SOLAR ENERGY AND COGENERATION

[SDG 13.1]

One of the most remarkable achievements attained in 2024 was the enhancement of our capacity in terms of solar energy generation and cogeneration. In this regard, we increased Promigas’s installed capacity to 91.7 MW regarding solar energy and 48.1 MW in terms of self- and cogeneration, which has enabled more clients to gain access to sustainable energy solutions. As part of this growth, we have developed projects such as the 2.3-MW solar park for Lamitech and the 6.5-MW trigeneration for Unibol, two initiatives that reflect the industrial sector’s commitment to adopting cleaner and more efficient technology.

In addition and in alignment with these progress achievements, Promigas opened the Barrancabermeja photovoltaic power plant, which supplies the operating stations with renewable energy while also reducing the dependency on interconnection networks.

Furthermore, Corfi and Banca de Inversión advised the ‘Puerta de Oro’ solar energy project, the largest independent solar park in Colombia, with an installed capacity of 358.6 MW and located in the Guaduas municipality, Cundinamarca. The estimations for this project, which was structured under the project finance method, conclude that it will generate enough clean energy for 390,000 households, thus contributing directly to the expansion of the access to renewables and setting a milestone in the sector development in Colombia.



Harinera del Valle’s solar park has been another key factor as it generates 30% of the clean energy used by the production plant in Villa Rica, Cauca, showcasing how the photovoltaic solutions are transforming the energy matrix of strategic sectors in favor of the country’s development.

The energy infrastructure growth has been another crucial pillar of our strategy. In 2024, we were able to connect 400,000 new natural gas and electrical energy customers, which allowed expanding the access to these essential services for thousands of families and companies across the country.

ENERGY OPTIMIZATION IN TERMS OF INFRASTRUCTURE AND TRANSMISSION

Our commitment to energy efficiency has expanded to the modernization of infrastructure in multiple sectors. Through Coviandina, we have replaced the sodium lighting units with LED technology in the tunnels, which has led to energy savings amounting to 153,124 kWh per year.

On another note, in Covipacífico, we have implemented a sustainable mobility strategy by incorporating two electric vehicles for road inspection and establishing charging stations. In the context of public transport, we deployed, through Promigas, the pilot plan of hydrogen buses in Cartagena, with the incorporation of the first hydrogen-powered bus in Colombia. The vehicle, which has a capacity of 50 passengers, was integrated to the public transport system of the Bolívar department’s capital.

[SDG 9.1]

This pilot program is developed in association with Transcribe and has the objective of reducing the emission of pollutants and making progress in the implementation of clean mobility infrastructures.

In March 2022, Promigas launched a pilot project (pioneer in Latin America) for the production of green hydrogen and its blending with natural gas in transport and distribution networks. The project was started in the ‘Heroica’ station, located in the industrial area of Mamonal (Cartagena). This plant uses an electrolyzer powered by a 137-kWp solar park comprising 324 photovoltaic panels that allow generating approximately 1,574 kilograms of green hydrogen per year. By the end of 2024, we finalized the business agreement for the supply of low-pressure hydrogen to customers from the oil & gas industry. In addition, this pilot project was shortlisted in the innovation category of the Portafolio Awards.

ENERGY OPTIMIZATION IN THE TOURISM AND AGRIBUSINESS INVESTEES

Our tourism and agribusiness investments have adopted multiple strategies centered on optimizing their energy consumption and reducing their carbon footprint.

At Unipalma, we implemented an energy cogeneration system based on biogas harnessed from industrial waste to generate up to 634 kWh, which has enabled the company to operate with 85% renewable energy and to reduce its dependency on traditional sources.

[SDG 13.1]

ENERGY CONSUMPTION WITHIN THE ORGANIZATION

[GRI 302-1] [GRI 302-3]

	THERMAL (MWh)	RENEWABLE, INCLUDING CERTIFIED ELECTRICITY (MWh)	NON-CERTIFIED ELECTRICITY FROM THE GRID (MWh)	TOTAL CONSUMPTION (MWh)	INTENSITY (KWh/ COP MILLION)
ENERGY & GAS	367,097	1,239	10,091	378,427	0.051
INFRASTRUCTURE	44,216	4,656	20,829	69,701	0.024
TOURISM	19,620	340	10.09	50,509	0.112
AGRIBUSINESS	20,981	54,031	1,939	76,951	0.237
CORFICOLOMBIANA	2	0	876	878	0.0001
OTHER	0	4,685	256	4,941	0.003
2024 TOTAL	451,915	64,949	64,541	581,405	0.427
2023 TOTAL	332.96	7,069	N/A	340,033	0.025
2022 TOTAL	485,933	6,664	N/A	492,597	0.033

As for **Hoteles Estelar**, we have developed projects focused on energy optimization at its facilities, including actions such as modernizing chillers, overhauling boilers and installing advanced control systems for chilled water plants. These initiatives have allowed a consumption reduction of more than 270,000 kWh per year.

EFFICIENT AND SUSTAINABLE MANAGEMENT OF WATER RESOURCES

[GRI 303-4] [GRI 303-5]
[SDG 12.2]

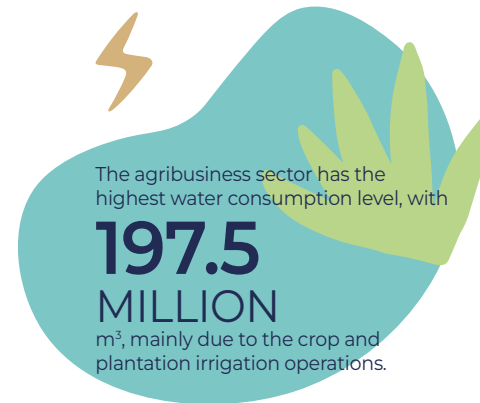
WATER WITHDRAWAL AND CONSUMPTION

[GRI 303-3] [GRI 303-5]

In 2024, we implemented key strategies focused on consumption optimization, water resource recirculation and the adoption of saving technology in multiple industries. By modernizing the infrastructure, treating and recycling wastewater and using water efficiency and monitoring systems, we have made important progress in the reduction of water consumption and in the improvement of the availability of water resources in strategic sectors.

Excluding agribusiness, the total consumption of water in our investments amounts to 687,000 m³, mainly distributed among the tourism, energy & gas and infrastructure investments. These differences reflect the particularities of each sector in terms of the use of water resources, where tourism and energy demand greater volumes for their daily operations. By means of efficiency and optimization strategies, we continue promoting the responsible use of water in each one of these contexts.

The agribusiness sector presents the largest water consumption, which stands at



197,5 million of m³, mainly due to crop and plantation irrigation. However, unlike other sectors, a significant part of this water is not lost, as it is reincorporated into the natural cycle of the ecosystem via evotranspiration. This process is crucial in the sustainability of agricultural production, as the water returns to the atmosphere and eventually contributes to the hydrological regulation of the surrounding ecosystems.

By means of optimized irrigation systems and sustainable practices, we strive to maximize the efficiency in the use of water in our agribusiness investments.

The following section presents the details of the main initiatives that have made this progress possible:

WATER CONSUMPTION OPTIMIZATION IN INFRASTRUCTURE:

In the infrastructure concessionary companies Covipacífico, Coviandes and PISA, we have formulated and implemented comprehensive water management plans, incorporating measures such as reuse strategies, leak fixing, and rainwater catchment, storage and utilization. These strategies have allowed achieving a water consumption reduction of 27.319 m³ in the infrastructure projects, optimizing the use of water resources in the road-management and construction operations.

On another note, in Panamericana, we have implemented a mobile wastewater treatment plant (WWTP) with an investment of COP 320 million, thus enabling an important reduction in potable water consumption and enhancing the company's operational resilience in light of the water resource availability variations. This treatment plant contributes to the circularity of water in its processes, lowering the environmental impact of its operations.

INNOVATIONS IN THE AGRIBUSINESS INVESTEEES

Our Agribusiness investments have adopted advanced technology solutions centered on the efficient management of water. At Pajonales, we have optimized the irrigation systems by means of high-efficiency sprinklers and soil monitoring maps, achieving a 22% increase in rice productivity thanks to a more efficient use of water and to the improved water resource management in the field.

In turn, at Mavalle, we have implemented a water recirculation model in its industrial process, making it possible to reuse 50% of the previously used water.

[SDG 9.4]





Rice field at the Pajonales estate in Ambalema, Tolima, Colombia.

This allows minimizing the withdrawal from new water sources.

WATER EFFICIENCY IN HOTELS

As for Hoteles Estelar, we have made progress in the replacement of toilets and faucets with low-consumption models, thus contributing to the reduction in the use of water at the facilities.

Thanks to these initiatives, we were able to achieve a 9.5% water consumption reduction for the entire hotel chain, optimizing the operation of its services without compromising the quality provided to the guests.

REDUCTION, REUTILIZATION AND RECYCLING OF WASTE

[GRI 306-2] [GRI 306-3]

We continued driving the transition toward a circular economy, strengthening our strategies centered on waste reduction, materials reutilization and recycling. Through the optimization of processes and the implementation of resource utilization programs, we have been able to minimize the environmental impact of our operations, reducing the production of waste and promoting its utilization in other production chains.

GENERATION, DIVERSION AND ELIMINATION OF WASTE

[GRI 306-3] [GRI 304-4] [GRI 304-5]

	2021	2022	2023	2024 Corfi and companies	2024 Corfi
WASTE RECYCLED (tons)	1,908	2,382	3,842	2,180	1
WASTE ELIMINATED (tons)	3,262	8,444	2,463	2,088	1
LANDFILL (tons)	1,836	7,653	2,219	1,837	1
INCINERATED WITH ENERGY RECOVERY (tons)	-	-	-	18	0
INCINERATED WITHOUT ENERGY RECOVERY (tons)	-	-	-	13	0
OTHER (tons)	1,426	791	201	220	0

*Data as of June 30th, 2025

The following are examples of key initiatives that have driven such progress:

REUTILIZATION OF MATERIALS IN INFRASTRUCTURE

In the infrastructure sector and through Covimar, we have carried out a project focused on utilizing recovered materials from infrastructure assets undergoing renovation processes, including doors, toilets and windows, which were reutilized to improve the infrastructural conditions of seventeen education institutions in the area of influence of the road management project.

SUSTAINABLE WASTE MANAGEMENT IN HOTELS

In our tourism investments, we have also advanced in the consolidation of circular economy models. Hoteles Estelar has implemented a comprehensive composting and recycling program centered on the sustainable management of organic and plastic waste.

[SDG 12.5]



Flavor that Preserves the Rivers and the Llanera Culture

In the heart of the Colombian Orinoquía region, San Luis de Palenque, Casanare, is demonstrating the tourism can be a powerful tool for the conservation of biodiversity and the restoration of ecosystems. Since 2023, Fundación Corfi, in partnership with Hoteles Estelar Yopal and Fundación Travolution, has driven the sustainable development of this territory by promoting tourism as an engine of the protection of the region's ecosystems and their invaluable natural capital.

This initiative turns San Luis de Palenque into a destination that protects key ecosystem services that represent the sustenance of the community and its culinary culture. The rivers in the region, which are essential in terms of water regulation and food provision, harbor species such as the 'bocachico,' a fish that is a staple of people's diet in the region and the main ingredient of the traditional 'Pira' soup. Its conservation depends on healthy aquatic ecosystems where water flows freely.

In 2024, we launched the municipality's first tourism product, 'Arraigo Llanero,' until the creation of the 'Red Vive El Pauto' Association, facilitating strategic partnerships for sustainable infrastructure. Each mindful visit and each experience in nature reinforce the protection of these ecosystems, guaranteeing the continued presence of key species and promoting a growth model that respects the natural wealth of the Orinoquía region and its cultural heritage.



07.2 Mitigation of and adaptation to climate change

[GRI 305-1][GRI 305-2][GRI 305-3][SASB FN-AC-410b1]

APPROACH TO RISKS, OPPORTUNITIES AND STRATEGY

[GRI 3-3]

Climate change represents an overarching challenge for all sectors where Corfi's companies operate, bringing about physical, market and regulatory compliance risks that may have an impact on the profitability and sustainability of the investments. In the context of Energy & gas, extreme climate events could interrupt the transport infrastructure, while the evolution of environmental regulations represents an opportunity to strengthen the sector's sustainability by promoting more efficient operational practices and facilitating an orderly transition to cleaner energy sources. In the infrastructure sector, the adequate management of climate events and the adaptation to new regulations are key aspects in ensuring the continuity of the projects. The implementation of proactive strategies allows mitigating impacts, ensuring compliance and improving both the financial sustainability and the project's reputation. The agribusiness sector faces risks that stem from climate variability and adversely affect production and the costs of supplies, while the tourism and hotel sector is vulnerable to extreme climate events and sanitary crises, with direct impacts on both the demand and occupancy. In light of these possible threats, Corfi reinforces the climate risk management approach by incorporating methodologies focused on evaluating the potential impact of this type of events on the operations and investments, while we strive to be aligned

with global and local regulatory frameworks to anticipate future challenges and to be able to manage them adequately.

Corfi is also consolidating strategic and proactive climate management processes focused on both progressive decarbonization and climate resilience. The Holding Company has enhanced its climate governance by aligning its strategy with international standards such as the recommendations issued by the Task Force on Climate-related Financial Disclosures (TCFD) and the standard established by the Partnership for Carbon Accounting Financials (PCAF), thus ensuring a more precise measurement of its emissions and its impact on the transition to a low-carbon economy. In the coming years, Corfi will continue deploying projects centered on energy efficiency, renewables, sustainable mobility and nature-based solutions with the aim of reducing our carbon footprint and continue creating value.

Additionally, we will prioritize investment in climate adaptation and mitigation technology by ensuring each sector integrates sustainability and resilience criteria with regard to the effects of climate change.

APPROACH TO RISKS, OPPORTUNITIES AND STRATEGY

[GRI 3-3]

STRATEGIC APPROACH AND GOALS				
Reducing our GHG emissions (scopes 1 and 2) by 25% and advancing toward carbon neutrality to achieve it by 2050.	Defining the decarbonization pathways for Corfi and its companies.	Implementing emission offsetting strategies that make use of carbon credits and are aligned with the activities of the investees.	Continuously improving our climate change management processes by adopting leading practices recommended by monitors such as the CDP and S&P, among other.	Reinforcing our climate change management strategy based on the S2 <i>International Financial Reporting Standard (IFRS) about Sustainability</i>
MAIN PROGRESS ACHIEVEMENTS				
<ul style="list-style-type: none"> Development of the first green hydrogen pilot in Colombia with injection in natural gas networks. Modernization of energy systems and equipment at Hoteles Estelar's multiple facilities and construction of Covipacifico's solar park, achieving a combined reduction of 92 tons of CO₂ eq. per year associated with electricity consumption. 	<ul style="list-style-type: none"> Update of the estimation of financed emissions to have a more accurate picture of the environmental impact of our investments. Identification of decarbonization drivers that will be needed to manage and reduce greenhouse gas emissions over time. Start of the process of establishing work plans with the companies to determine a decarbonization pathway. Development of green hydrogen and bio-methane projects to diversify our energy portfolio. 	<ul style="list-style-type: none"> Mavalle's reforestation program, with more than five million rubber trees that have captured 1.3 million tons of CO₂ (based on the BioCarbon Standard and certified by the Colombian Institute of Technical Standards and Certification - ICONTEC). 'Corozo' Project, developed jointly with Fundación Caturben to preserve 105,000 hectares of tropical dry forest and wetlands, preventing the emission of 3.5 million tons of CO₂ by 2044 (certified under the VCS Verra standard). Ecological restoration project deployed by Hoteles Estelar by planting 1,318 trees in several regions across Colombia (59% through <i>Saving the Amazon</i>). 	<ul style="list-style-type: none"> Promigas entered the Top 10 of the National Business Association of Colombia's Innovation Ranking, consolidating itself as the second most innovative company in the Colombian energy sector. Improvement in SP Global's Corporate Sustainability Assessment regarding two criteria: Climate Strategy, going from 72 to 88 points; and Decarbonization Strategy, increasing from 18 to 60 points. Corfi made significant progress going from a D rating to a B rating according to the CDP, exhibiting notable improvement in climate management and commitment to sustainability. 	<ul style="list-style-type: none"> Second report prepared under the TCFD framework.

ENVIRONMENTAL REGENERATION, OFFSETTING AND CONSERVATION

[GRI 304-3]

OBJECTIVES AND COMMITMENTS TO CLIMATE CHANGE MITIGATION

As part of our commitment to continuously improving our environmental management processes, we have made progress in the reduction of our greenhouse gas (GHG) emissions (scopes 1 and 2). These reductions were calculated under the financial control approach, which accounts for 100% of the emissions of companies under our direct control. To date, we have achieved a reduction of 30.9% when compared to our base year (2019) per COP millions of revenue. This reinforces our objective of decreasing these emissions by 25% in 2025 and advance toward carbon neutrality before 2050.

However, given the recent adoption of the financed emissions approach, aligned with the methodology proposed by the Partnership for Carbon Accounting Financials (PCAF), we are reviewing our climate targets to ensure their consistency with this new perspective and our updated decarbonization strategy.

These reductions correspond to the total emissions produced by Corfi and its investments. Our climate objectives include an increasingly improved alignment with the overall commitment to limiting global warming to 1.5 °C, in accordance with the Science-Based Targets established by the homonymous initiative (SBTi), the We Mean Business coalition and Colom-bia's goal of realizing a carbon-neutral economy by 2050.

Each one of our companies has established reduction goals aligned with our corporate objectives and, to date, all of them are making progress in the process of fulfilling them.

Promigas, which is responsible for more than 60% of Scope 1 and 2 emissions, has achieved an estimated reduction of 9,000 tons of CO₂ through its decarbonization roadmap, thanks to the implementation of strategic initiatives.

GOALS RELATED TO THE INVESTMENT PORTFOLIO

2025	2030
Reduction in scope 1 and 2 emissions by 25% in terms of intensity per revenues in Corfi and its companies.	Reducing scope 1 and 2 emissions by 40% in terms of intensity per revenues in Corfi and its companies.

Over the year, we adjusted our emissions calculation methodology, going from the financial control approach to the financed emissions approach, according to the methodology recently established by the Partnership for Carbon Accounting Financials (PCAF) for organizations from the finance sector in an attempt to develop metrics more suitable to the dynamics of its economic activity.

This change enables us to reflect, in a more accurate manner, the emissions-based impact of our company and investments according to our ownership interest in each one of them. With this adjustment, we get aligned with the global standards of the finance industry we belong to and with organizations whose nature is similar to ours in Colombia, across the region and around the world. The following table presents our estimations updated using this methodology:

TOTAL EMISSIONS

[GRI 305-1][GRI 305-2][GRI 305-3]

EMISSIONS tCO ₂ e	2019 BASE YEAR	2022	2023	2024
S1	77	72	76	34
S2 <small>Location based / Market based</small>	273 / 273	122 / 0	190 / 0	153 / 0
S3	1,451,227	1,390,366	1,472,010	1,392,981

Data as of June 30th, 2025

FINANCED EMISSIONS

[SASB FN-AC-410b1]

EMISSIONS tCO ₂ e	2023	2024
S1	97.280	98.022
S2	10.523	10.640
S3	1,346,599	1,282,858
% of coverage*	97.2%	90.7%

These measures will be reviewed in accordance with the progress made in the implementation of the financed emission measurement exercise with the objective of committing to goals that are even more challenging but still attainable, thus ensuring that our climate strategy evolves based on more accurate data aligned with the leading international practices.

*Including the assets that comprise both listed and unlisted stock. Consumer credits are not considered. Data as of June 30th, 2025

This shift in the Holding Company's measurement methodology will not affect the annual report of GHG emissions that we have been publishing on Corfi and its investments. We are fully invested in our commitment and determination to align the management and operation of our investments with efficient standards in terms of energy consumption, sustainable operation and, in general, emissions 1, 2 and 3. That is why Corfi will work continuously with the direct investees where we have controlling interest in order to ensure they take decarbonization pathways or to support them in their efforts, should they have already taken such pathways.

In the case of all the other investments in our portfolio, we will continue promoting good practices and leading standards in hopes of steering them to advance in the same direction.

STRATEGY

CLIMATE CHANGE MITIGATION AND ADAPTATION PLANS

Corfi has implemented climate change mitigation and adaptation plans in all its investments, with initiatives centered on the decarbonization of the operations, the integration of climate-related criteria in the investment decision-making process and the evaluation of sustainable investments. The purpose of these plans is to ensure each company adapts to the climate risks according to its specific level of exposure and management capacity. As part of this strategy, we are formulating decarbonization plans to supplement the actions that we have been developing for two years now.

Our climate strategy has been structured on two levels:

1. Corfi's corporate strategy, which defines the vision and general direction regarding climate matters.
2. Individual strategy of each company, all of which are designed based on the particularities of the corresponding sector and the specific climate risk level.

STRATEGIC PLANNING FORMULATED AND DEPLOYED BY CORFI

The climate change strategy is formulated based on Corfi's corporate vision and integrated across the entire Organization by means of a structured governance. The Board of Directors establishes the policy and oversees its implementation with support from specialized committees, while the Chief Executive Officer's team leads its enforcement with the support of the Vice Presidents and their teams. The climate risk management processes, the alignment with the corporate objectives and the fulfillment monitoring are articulated through the responsible departments, thus ensuring an overarching and sustainable approach with a check and balance system.

STRATEGY IN OUR INVESTMENTS

In our investments, all companies have standardized the measurement of their carbon footprint. In addition, we have developed specific climate change management strategies, evaluating plans for mitigation, adaptation, risks and opportunities in each particular sector.

The actions each one of our investees is working on include:

Infrastructure

- Real-time data collection to optimize route times.
- Development of photovoltaic projects; high-efficiency lighting in tunnels and toll stations.
- Inspection of hydraulic networks to detect and repair leaks.
- Purchase of Euro VI-standard vehicles and electric vehicles to improve our energy efficiency.
- Expense management regarding goods procured, using ESG criteria in the selection of suppliers.

Energy & gas

- Boost to the diversification of the portfolio by venturing into green hydrogen.
- Projects centered on energy storage, energy efficiency and bio-methane production.
- Energy management using artificial intelligence and advanced analytics to optimize our operational efficiency and reduce energy costs.
- Detection of leaks and repair work in the transport and distribution operations through the standardization of the GEMINI Program. Prevention of ruptures in distribution networks, optimizing response times and strengthening the education and communication on leak reports.
- Compressor venting operation management with more efficient start up and shut down cycles.
- Adjustment of procedures to reduce emissions in new distribution connections.
- Electricity consumption reduction through better contract management performance.



Bus network powered with Gases del Caribe's natural gas for vehicles in Barranquilla, Atlántico, Colombia.



Tourism

- Environmental campaigns targeting the guests to raise their climate awareness.
- Overhauling and replacement of equipment and optimization of facilities, reducing the consumption of gas, water, energy and the use of chemicals.
- Transition to renewables at multiple Hoteles Estelar facilities.
- Participation in reforestation and ecological restoration projects.



Agribusiness

- Implementation of manure collection and composting systems, reducing fuel and fertilizer consumption.
- Recovery and utilization of palm fruit waste for producing biomass and methane for biogas cogeneration.
- Use of multispectral drones and advanced sensors at Pajonales to optimize the use of agricultural materials.
- Carbon capture in crops and plantations, and certification of carbon credits.

DECARBONIZATION ROADMAP

To reinforce these initiatives, with support from ERM's consultant team, we developed a decarbonization roadmap that establishes a strategic vision and identifies drivers for the management of GHG emissions in our infrastructure, agribusiness, tourism and financial service investments.

The energy & gas sector had already made progress in this process, the exercise we are currently carrying out will be integrated with its work so far, thus enabling a broader and more coordinated vision.

This analysis allowed us to identify the main emission sources, improve the inventories and determine possible reduction strategies with a special focus on scope 3 emissions through the use of estimated information based on proxy data.

The roadmap proposes a 10-year action plan based on initiatives/drivers centered on energy efficiency, low-carbon technology, operational improvements and supplier management. This plan will enable us to advance progressively toward an increased emission reduction. The purpose of these strategies, whose particular work plan will be formulated in 2025 jointly with each investment, is to align our operations with long-term sustainability and climate action, thus consolidating our commitment to mitigating climate change and adopting the best environmental practices.

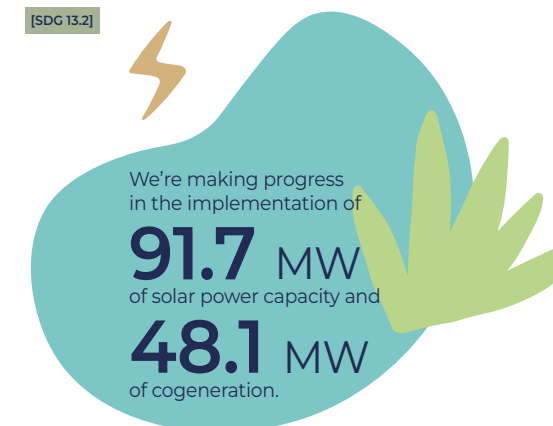
By means of this exercise, we will review the decarbonization goals of the entire Holding Company and its investments with the objective of ensuring their alignment with the evolution of the emission measurement methodology used and the climate strategy while making sure they are also aligned with the local and international goals.

OUR PROGRESS IN TERMS OF SUSTAINABILITY AND CLIMATE ACTION

Through Promigas and its affiliate companies, we have made a positive contribution to the energy security of both Colombia and Peru, and to their transition to an energy matrix with clean and efficient energy sources. Firstly, we made progress in the implementation of 91.7 MW of solar energy generation capacity and 48.1 MW of cogeneration. On another note, in the context of natural gas, we play a key role in the decarbonization of the region's energy sector due to its lower environmental impact when compared to traditional fossil fuels, such as coal and diesel. Its use in cogeneration operations allows reducing up by 50% the CO₂ emissions in industrial and energy generation processes, while its flexibility facilitates the integration of intermittent renewables such as solar and wind power.

Additionally, we boosted energy efficiency and the generation of renewable gases, including bio-methane and green hydrogen, with the purpose of innovating and producing supplies for the country to move towards an energy system that would not only be more sustainable, but also more diversified over time. One of the most important milestones that we would like to highlight is the development of the first green hydrogen pilot in Colombia with injection in natural gas networks. In alignment with this initiative, Promigas signed a memorandum of understanding with *Sumitomo Corporation Andes*, a Japanese business group, with the objective of exploring and developing the electric mobility market with green hydrogen in both Colombia and Peru.

[SDG 13.2]



Through Promigas's Energy & Gas Research and Innovation Center (abbreviated CIIEG in Spanish), we have reinforced our energy solution portfolio with storage, bioenergy and thermophotovoltaic projects. In 2024, Promigas entered for the first time the Top 10 of the National Business Association of Colombia's Innovation Ranking, thus consolidating itself as the second most innovative company in the Colombian energy sector.

In the agribusiness investments, we have started, through Unipalma, the process centered on utilizing the palm fruit waste to produce biomass at the extraction plant. These actions enabled us to generate 2,322 MWh of renewable energy. This initiative not only reduces the dependency on conventional energy sources, but it also mitigates the environmental impact of the production process.

In the infrastructure investments, specifically in Coviandina, we implemented an electronic toll system, smart sensors to capture real-time data of the vehicle flow and climate conditions, and ITS technology in the tunnels to improve road safety and operational efficiency.

These initiatives not only have allowed reducing by 18% the average travel time and decreasing the number of traffic incidents at critical locations, but they have also significantly contributed to lowering the indirect emissions (scope 3).

By optimizing the mobility and minimizing the stoppage times at toll stations and tunnels, we have achieved a reduction in fuel consumption and, therefore, in the emissions of CO₂ and other pollutant gases produced by the circulating vehicles. Additionally, the collection of real-time data improves the traffic planning and lets drivers avoid congestion and inefficient routes, thus shrinking even more the carbon footprint of the transport portfolio.

In Covipacifico, we brought into operation the first solar park at the exit portal of the Sinifaná tunnel in the department of Antioquia. This photovoltaic system generates an average of 18,000 kWh/month, which supplies 60% of the energy needs of the tunnel portal and represents approximately 41 tons of CO₂ eq. in emissions reduced. Moreover, we have initiated seven new photovoltaic projects that will begin operations in 2025 with the purpose of supplying energy to tunnels and operational facilities along the roadway corridor.

On another front, through Hoteles Estelar, we implemented solar panel projects at several facilities with the purpose of promoting the use of renewables and, thus, contributing to reducing their carbon footprint. In addition, we have deployed multiple energy optimization initiatives, including actions such as modernizing chillers, overhauling boilers and installing advanced control systems for chilled water plants.

Thanks to these improvements, we have been able to achieve a consumption reduction of more than 270,000 kWh per year, which means we have prevented the emission of approximately 51 tons of CO₂ eq. per year.

EMISSION OFFSETTING ACTIONS ALIGNED WITH THE ACTIVITIES OF THE INVESTEES

Corfi's mitigation strategies include emission offsetting actions through the purchase of carbon credits and the execution of reforestation and ecosystem restoration projects in partnership with multiple environmental organizations.

Mavalle has more than five million rubber trees that have captured 1.3 million tons of CO₂ based on the BioCarbon Standard, which is a certification and registration program that develops carbon and biodiversity standards certified by the Colombian Institute of Technical Standards and Certification (ICONTEC). In 2024, the company recorded 146,392 tons of CO₂ captured during its sixth verification audit, thus consolidating its leadership in terms of carbon solutions.

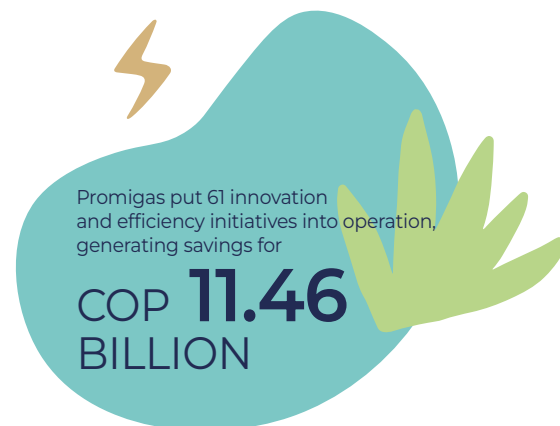
Furthermore, we launched the 'Corozo' Project, deployed by Promigas and Fundación Cataruben, which is the first large-scale conservation program in Colombia's north coast, and it is certified

under the VCS Verra standard (one of the most renowned carbon certification systems worldwide). The objective of this initiative is to protect 105,000 hectares (405.41 square miles) of tropical dry forest and wetlands, avoiding the emission of 3.5 million tons of CO₂ by 2044.

[SDG 13.3]

Through Hoteles Estelar, we have participated in ecological restoration actions by planting 1,388 trees in multiple Colombian regions, generating carbon sequestration and promoting the recovery of strategic ecosystems.

From the total number of trees planted by Estelar, 59% were planted through Saving the Amazon, including 818 native species trees planted in the Colombian Amazon region, representing approximately 51 tons of CO₂ captured and strengthening the Company's commitment to both sustainability and climate change mitigation.



INNOVATION AND DEVELOPMENT OF CLIMATE SOLUTIONS

We continue prioritizing innovation in all Corfi companies as a crucial tool in the mitigation of climate change.

Through Promigas in the energy sector, we developed an energy management platform based on artificial intelligence and advanced analytics. This tool optimizes the efficiency of the company's operations and reduces the energy costs for the customers. Additionally, we put 61 innovation and efficiency initiatives into operation, generating savings for COP 11.46 billion and more than 66,000 hours of resource optimization.

For its part, with the implementation of IoT technology in Unipalma's extraction plant and the use of multispectral drones and advanced sensors at Pajonales, we optimized the use of agricultural supplies, significantly reducing the scope 3 GHG emissions, which include those related to production, transport and the application of fertilizers and pesticides, one of the main sources of emissions in the agro-industrial sector. By using supplies in a precise and localized manner, we diminish the demand for fertilizers; therefore, we reduce the emissions produced in their manufacturing and transport, while mitigating the emissions of nitrous oxide (N₂O). In addition, with the optimization of processes at the extraction plant using IoT technology, we have increased its operational efficiency up to 95%, thus lowering the energy consumption and all associated emissions.

PERFORMANCE IN THE ESG EVALUATIONS

Corfi has exhibited an outstanding performance in terms of climate change and decarbonization strategies, which is reflected in the improved ratings obtained in both the 2024 CSA and the CDP's assessment, as well as in our commitment to climate action based on international standards. Our climate change strategy is aligned with the TCFD recommendations, and it is backed by quantifiable GHG emissions reduction goals.

In 2024, our net GHG reduction totaled 17% with respect to the 2019 base year, surpassing the 15% goal for 2025 by implementing projects centered on energy efficiency, ecosystem regeneration

and excluding carbon-related investments, thus getting aligned with the Paris Accords. Moreover, we also enhanced our climate governance by evaluating associations and trade organizations with the aim of ensuring our alignment with the sustainability principles.

WE PERFORM CLIMATE CHANGE MANAGEMENT ACTIONS AND MITIGATE OUR FOOTPRINT

[GRI 201-2]

We have established a climate change policy that has been approved by our Board of Directors and is aligned with the TCFD recommendations. This strategy includes the identification of climate-related risks and opportunities, the formulation of the climate change strategy, the implementation of metrics and objectives, and the governance model for these issues within the Organization.

As a Holding Company, we have supported our investees in the definition and strengthening of their individual strategies centered on climate management and carbon footprint mitigation with the purpose of ensuring an approach aligned with the sustainability goals. Currently, our companies have structured their strategies based on the TCFD framework, establishing emissions reduction targets. In the case of Promigas, the adoption of the SBTi targets faces specific challenges due to the nature of gas as a transition fuel, as well as the technological constraints for its full decarbonization in the short term. Nevertheless, being convinced of the importance of gas as transition energy for both Colombia and Latin America and reasserting our long-term commitment with a low-emissions economy, we have devised ambitious goals to align our investment in gas with the Paris Accords, including the 50% reduction in the intensity of its emissions (scopes 1, 2 and 3) by 2028.

CLIMATE RISK MANAGEMENT

Corfi and its companies have conducted climate risk mapping exercises using international standards and industry peer organizations as benchmarks. Based on this exercise, we have identified 18 climate risks, both physical and transition-related.

TO ANALYZE THEM, WE USE TWO KEY SCENARIOS:

Physical risks: evaluated based on the Representative Concentration Pathways RCP 6.0 scenario created by the Intergovernmental Panel on Climate Change, which projects a temperature increase of 3.0 °C by 2100. This scenario reflects the continuation of current climate policies, without enough measures to fulfill the Paris Agreement. This scenario considers an increase in the frequency and intensity of extreme climate events that would affect the ecosystems, people's health and economic stability. As part of this analysis, through Promigas and its controlled companies, we have selected the slow transition scenario (RCP 4.5) as the most probable pathway, considering the role of natural gas as a transition fuel in a context of scarcity in terms of mineral supplies for renewable energies and the reconfiguration of climate-related targets due to geopolitical conflicts.

Transition risks: assessed using the Net Zero 2050 scenario established by the Network of Central Banks and Financial Supervisors for Greening the Financial System (NGFS), which limits global warming to 1.5 °C and contemplates the development of strict and immediate climate policies. This scenario entails a quick decarbonization through the transition to renewables, energy efficiency and emissions reduction technology, generating higher costs related to the fulfillment and adaptation for the companies.

We conducted the assessment using an expert approach, integrating climate data, physical impacts of climate change and regulatory trends. Along with each company's team and the support provided by the specialized firm LRQA, we performed a qualitative analysis of each risk identified by using Corfi's corporate risk methodology.

This assessment considered probability and impact, determining the main impact pathways: revenues, costs and expenses, and asset value. As a result, we drew up individual climate risk maps for each company.

Scan this QR code to see the details of each company's risk analysis.



07.3 Biodiversity and business

[GRI 304-2] [GRI 304-3] [GRI 304-4]

APPROACH TO RISKS, OPPORTUNITIES AND STRATEGY

[GRI 3-3]

Biodiversity loss and habitat degradation are significant risks for the continuity and sustainability of all our operations. We are aware of these risks and we acknowledge and manage under the utmost responsibility, recognizing that the performance of our businesses must be furthered in harmony with the environment.

In the context of our infrastructure portfolio, the fragmentation of ecosystems and the alteration of bodies of water could affect the biological connectivity, thus generating environmental conflicts and restriction in the development of projects. As for the energy & gas portfolio, the interference with strategic habitats caused by the operation of transport networks could entail the alteration of ecosystems. The agribusiness sector faces challenges stemming from deforestation, the intensive use of water resources and the loss of agricultural biodiversity, which could compromise the stability of the production operations and increase the vulnerability with regard to extreme climate phenomena. In the tourism field, the degradation of natural ecosystems could reduce the appeal and accessibility of the destinations, and adversely affect the demand. This would have a direct negative impact on the sector's profitability.

Aware of these challenges, Corfi and its investees will make even more intensive progress in relation to the integration of positive biodiversity in corporate management processes by means of ecological restoration strategies, monitoring of key species, and regeneration and conservation of critical habitats. We will reinforce the implementation of nature-based

solutions, promoting ecosystem regeneration and biological connectivity through the restoration of the flora and the maintenance of ecological corridors. In addition, we will consolidate our involvement in global initiatives centered on assessing risks and opportunities linked to biodiversity while guaranteeing our investees and operations produce a positive environmental impact and ensuring we are aligned with the emerging sustainability standards.

MAIN PROGRESS ACHIEVEMENTS REGARDING THE CORFISOSTENIBLE STRATEGY GOALS

[GRI 3-3]

STRATEGIC APPROACH AND GOALS

Implementing sustainable projects centered on the protection, conservation and regeneration of nature.

Strengthening initiatives focused on emission reduction and carbon capture through the conservation of ecosystems and reforestation.

Identifying and recording the wealth in terms of flora, fauna and funga in the areas of operation.

Implementing tree-planting programs that integrate the recovery of ecosystems, the protection of hydrological sources and the biological connectivity.

MAIN PROGRESS ACHIEVEMENTS

- Conservation and regeneration of 7,708 hectares (19.76 square miles) of diverse ecosystems, including dry, riverside and high Andean forests.
- Implementation of The Economics of Ecosystems and Biodiversity (TEEB) methodology proposed by the homonymous Initiative to quantify both the impacts and the restoration actions.

- Promigas implemented a decarbonization plan that includes the conservation of strategic ecosystems and the restoration of natural habitats.
- Since 2019, Mavalle has captured 1.3 million tons of CO₂ by means of more than five million rubber trees and maintaining its ISO 14001 certification.
- Unipalma implemented a biogas-based cogeneration system taking advantage of the energy of the non-reusable palm waste.

- Significant progress in the identification of endangered species included in the red list published by the International Union for Conservation of Nature and Natural Resources (IUCN).
- In our Infrastructure projects, 480 fauna and flora species have been monitored, including migratory birds and endemic species.
- Through Covipacífico, we published the Titiribí Bird Guide with the purpose of raising awareness about the region's ornithological wealth.

- We planted 336,166 trees in multiple Colombian regions through voluntary and mandatory actions.
- We planted 598,000 productive trees.

PROGRESS DETAILS REGARDING THE CORFISOSTENIBLE STRATEGY

[GRI 3-3]

ENVIRONMENTAL REGENERATION, OFFSETTING AND CONSERVATION

[GRI 304-3]

Over the year, we planted 336,166 trees in multiple Colombian regions through voluntary actions (6.4%) and as part of our environmental obligations (93.6%). In Colombia, the regulations demand that we offset the ecological impact produced by our activities. This has driven us to regenerate and restore 7,708 hectares (19,046.88 acres) in multiple ecosystems.

Energy & gas

The offsetting actions carried out by Promigas comprise strategic ecosystems in Carmen de Bolívar, Barrancabermeja, Cauca, Sucre, Magdalena and La Guajira, thus ensuring the recovery of areas intervened by its operation since 2019. As part of these efforts, more than 1,074 hectares (2,653.91 acres) have been protected, laying special emphasis on the conservation of swamp zones and hydrographic basins. Additionally, reforestation with native species contributes to the restoration of the ecosystem services that sustain biodiversity and human well-being.

Infrastructure

In the road concession projects, we have implemented important environmental offsetting measures. Through Covioriente, we have restored 920.47 hectares (2,274.53 acres) in several municipalities of the Colombian departments of Meta and Casanare, combining conservation, reforestation and sustainable production projects. Covimar has protected 173.97 hectares (429.89 acres) in Valle del Cauca, while we have led actions through Covipacífico in Titiribí, Antioquia, with the restoration of 440 hectares (1,087.26 acres), maintenance of biological corridors and the protection of 41.15 hectares (101.68 acres) of tropical dry forest. In addition, in Coviandes and PISA, we have carried out actions in the Cauca river basin in Valle del Cauca with the purpose of stabilizing the river-side ecosystems.

In total, our infrastructure sector investees have allocated 2,733 hectares (6,753.39 acres) to the recovery of landscapes intervened with roads and civil engineering works. The objective of these recovery actions is to ensure the environmental offsetting by the projects. As part of these actions, in Antioquia and the Colombian Caribbean Region, we have planted species such as yellow guayacán or ipê (*Handroanthus chrysanthus*), saman or rain tree (*Samanea saman*) and carbonero (*Calliandra pittieri*), which provide ecosystem services, thus improving the hydrological regulation and strengthening the resilience of the landscape.

Agribusiness

In the agribusiness sector investees, through Pajonales, Unipalma and Mavalle, we have led the conservation of dry forests, moriche palm plains and gallery forests, restoring more than 2,670 hectares (6,597.71 acres) of forest reserves and promoting actions centered on planting 552,782 productive trees in the Colombian Eastern Plains and Andean regions. In addition to this, 3,900 hectares (9,637.11 acres) were restored in palm, cocoa and rubber projects with the aim of strengthening the sector's sustainability.

Moreover, in Vaupés and the Amazon region, we have planted species such as moriche palm

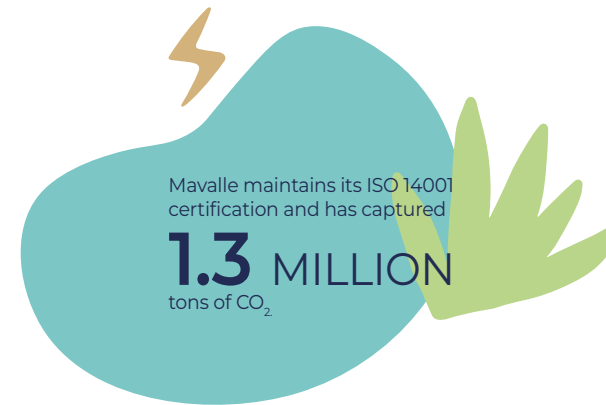
(*Mauritia flexuosa*) and sharinga tree (*Hevea brasiliensis*) to enhance the biological connectivity and offer shelter to the local fauna. In the departments of Cundinamarca and Tolima, we have used species such as cedars, oaks and willows, which help to stabilize the soil and reduce erosion in steeply sloped areas.

Apart from our planting and ecological restoration initiatives, we also started using the TEEB Initiative's methodology for measuring externalities in order to quantify the actual value of the impacts and the restoration actions on biodiversity, particularly in our road infrastructure activities.

In the case of the 'Conexión Pacífico 1' freeway, a strategic project within the National Government's Fourth Generation (4G) Road Concession Projects, we have intervened 480 hectares (1,186.11 acres), eighty of which (197.68 acres) have suffered impacts on ecosystems such as high An-

dean forests, pre-mountain and mountain forests, dry forests, tropical moist forests, riverside ecosystems and grasslands. To mitigate these effects, we have taken ecological restoration and regeneration actions in 440 hectares (1,087.26 acres), including the protection of 175 hectares (432.43 acres) at the 'La María' estate (in Amagá, Antioquia, Colombia) for the conservation of nearby bodies of water. As a result, we have promoted the reproduction of more than 25,000 units of approximately 180 native species, prioritizing those of high conservation value.

This exercise will be maintained throughout 2025 with advisory from multiple partners, which will allow improving the measurement of the direct and indirect effects of our operations on biodiversity and consolidating a benchmark for our commitment to environmental conservation and long-term sustainability.



MITIGATION OF CLIMATE CHANGE AND BIODIVERSITY-BASED OPPORTUNITIES

In 2024, we reinforced our commitment to climate change mitigation and to the reduction of carbon emissions by means of multiple initiatives. Through Promigas, we made progress in the deployment of the decarbonization strategy with the aim of reducing by 50% its carbon footprint by 2028 and achieving carbon neutrality by 2040. This commitment is a key part of a 22-initiative plan that includes the conservation of strategic ecosystems and the restoration of natural habitats. A component of this effort that stands out is the 'Corozo' initiative developed jointly with Fundación Cataruben and centered on preserving 105,000 hectares (405.41 square miles) of tropical dry forest and wetlands by 2044, thus preventing the emission of 3.5 million tons of CO₂.

On another note, Mavalle maintains its ISO 14001 certification and, since 2019, we have captured more than 1.3 million tons of CO₂ by planting and conserving more than five million rubber trees, thus contributing to the emission offsetting efforts.

Moreover, through Unipalma, we have optimized the use of water in 170 hectares (420.08 acres) in 'El Socorro' by reducing water consumption by 55%. We also implemented a biogas-based cogeneration project that enabled us to achieve a reduction of 129 tons of CO₂ during the first six months.

PROTECTION OF FAUNA, FLORA AND FUNGA

[GRI 304-4]

Corfi reasserts its commitment to biodiversity regeneration and conservation in each one of its investees by integrating strategies that ensure the protection of fauna and flora species in our areas of influence. Our companies have adopted an environmental approach that promotes

ecological regeneration, ecosystem connectivity and the involvement of communities and strategic partners to reduce the environmental impacts of their activities.

We are aware of the fact that, in the areas where our companies operate, endangered species have been identified, according to the IUCN red list. There are two species included in the Critically Endangered (CR) category: the tamarin (*Saguinus oedipus*), an endemic species from Colombia that is seriously threatened by deforestation and illegal trade, and the giant otter (*Pteronura brasiliensis*). The species from the Vulnerable (VU) category sighted in the area include: the margay (*Leopardus wiedii*), the golden-winged sparrow (*Arremon schlegelii*), the yellow-crowned parrot (*Amazona ochrocephala*), the giant anteater (*Myrmecophaga tridactyla*), the giant armadillo (*Priodontes maximus*), the South American tapir (*Tapirus terrestris*) and the Cuban cedar (*Cedrela odorata*). All these species face threats such as the loss of habitats and hunting. Their conservation is crucial for the ecological balance of the region.

TREES PLANTED AND HECTARES RESTORED BY INDUSTRY

[GRI 304-3]

INDUSTRY	PLANTED VOLUNTARILY	PLANTED MANDATORILY	PRODUCTIVE TREES PLANTED	HECTARES RESTORED
AGRIBUSINESS	2,164	270	552,782	3,900
ENERGY & GAS	4,064	23,268	0	1,074
INFRASTRUCTURE	13,901	291,111	45,273	2,733
TOURISM	1,318	70	0	0

NUMBER OF SPECIES IDENTIFIED THAT ARE INCLUDED ON THE RED LIST OF THE IUCN FOUND ON THE PREMISES OF OUR OPERATIONS

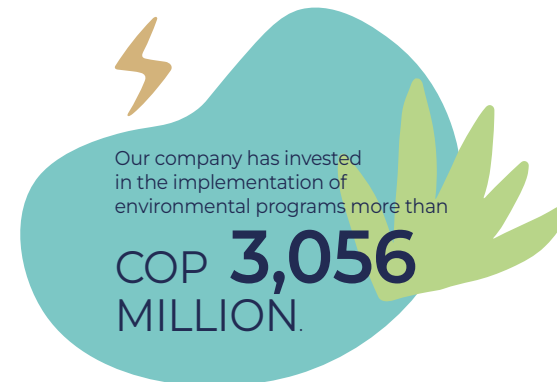
[GRI 304-4]

IUCN RISK LEVEL	NUMBER OF BIRDS	NUMBER OF MAMMALS	NUMBER OF AMPHIBIANS	NUMBER OF PLANTS
CRITICALLY ENDANGERED (CR)	0	1	1	0
ENDANGERED (EN)	0	3	0	0
VULNERABLE (VU)	4	4	0	2
NEAR THREATENED (NT)	1	1	0	1

PROTECTION OF BIODIVERSITY IN ENERGY & GAS

Through Promigas, we have implemented specific actions centered on the conservation of key species in our areas of operation. Along the +3,000 km (1,864.11 miles) of gas pipeline networks, we have identified endangered species, which have been monitored to record their presence and identify actions centered on ensuring that our operation produces the lesser possible impact on their relationships with other species in their habitats shared with our operations. Additionally, Promigas has developed endangered species relocation and protection programs that prioritize the conservation of critical habitats, such as the tropical dry forest, a highly threatened ecosystem found in Colombia's Caribbean Region.

Our company has invested more than COP 3.06 billion in the implementation of environmental programs, developing conservation initiatives that engage communities, institutions and control bodies in order to ensure the permanence of species and the restoration of degraded habitats.



In the 'Corozo' Project, which has been developed in partnership with Fundación Cataruben, Corfi has fostered the conservation of 105,000 hectares (405.41 square miles) of tropical dry forest and wetlands in the Caribbean Region. According to the Humboldt Institute, this ecosystem is one of the more seriously threatened in Colombia, with less than 8% of its original coverage, which is why it is essential to restore and preserve it for species such as the Colombian red howler (*Alouatta seniculus*), the black-headed spider monkey (*Ateles fusciceps*) and the giant anteater (*Myrmecophaga tridactyla*).

FAUNA CROSSINGS, BIOLOGICAL CORRIDORS AND NATURE-BASED SOLUTIONS IN THE INFRASTRUCTURE CONTEXT

In our infrastructure projects, we have prioritized the construction of fauna crossings and biological corridors, which are essential to reduce the fragmentation of ecosystems and allow the safe mobility of wild species.

Through Covioriente, we have invested more than COP 5.51 billion in the construction of 58 fauna crossings; in 2024, we build two underground crossings with a COP 199 million investment, and our plan is to build 16 more in 2025.

In road projects such as Covimar and Coviandina, we have identified and protected more than 480 fauna and flora species, including migratory birds and endemic flora species. Additionally, our environmental offsetting plans have enabled the protection of more than 661 hectares (1,633.37 acres) of ecosystems of high ecological importance, guaranteeing the conservation of species such as the white-tailed deer (*Odocoileus virginianus*) and the margay (*Leopardus wiedii*) in the projects' areas of influence.

Along the same line, the Titiribí Bird Guide published in 2024 by Covipacífico, is a prime example of a nature-based solution within the framework of the environmental offsetting actions of the 'Conexión Pacífico 1' freeway project. Beyond being just an identification tool, the aim of this initiative is to raise the awareness of both the local community and the visitors about the ornithological wealth of the municipality, thus encouraging the conservation efforts through environmental knowledge and education. Titiribí, a municipality located in a transition area between the bio-geographical Chocó region and the Colombian Andes Mountain Range, harbors a notable diversity of birds, with more than 225 migratory and endemic species recorded, including the orchard oriole (*Icterus spurius*), the sharp-shinned hawk (*Accipiter striatus*) and the apical flycatcher

(*Myiarchus apicalis*). This guide not only enhances the commitment to biodiversity, but it also promotes ecotourism and scientific knowledge among the citizens, thus fostering new economic and educational opportunities for the region.

DEVELOPMENT OF BIODIVERSE SOCIO-ECOLOGICAL SYSTEMS THROUGH OUR AGRIBUSINESS PORTFOLIO COMPANIES

In both Unipalma and Pajonales, we have made significant progress in the identification and conservation of species found in their agroecosystems. Unipalma harbors more than 700 flora and fauna species. Therefore, we use methodologies such as the use of camera traps to monitor the presence of vulnerable species, as it is the case of the South American tapir (*Tapirus terrestris*), the puma (*Puma concolor*) and the giant armadillo (*Priodontes maximus*).

By means of the 'Unipalma Biodiversa' (Biodiverse Unipalma), we have protected 349 fauna species and 373 flora species as an effort to strengthen the environmental management with strategic partnerships such as the one established with Fundación Kurupira, which is centered on monitoring endangered species. For its part, at Pajonales, the monitoring actions have allowed identifying 120 bird species, including migratory birds, confirming the role of these production ecosystems in the conservation of biodiversity.

Mavalle's ISO 14001 certification supports our environmental management of more than five million rubber trees, with carbon capture records amounting to 1,326,657 tons of CO₂. This commitment has enabled the sustainable coexistence of production activities with the preservation of species such as the giant otter (*Pteronura brasiliensis*), the jaguar (*Panthera onca*) and the military macaw (*Ara militaris*), while also promoting an ecological and conservation-focused tourism model.

PRESERVING THE NATURAL BEAUTY FOR TOURISM

Through our tourism investees, we have implemented multiple actions focused on contributing to the ecological restoration and biodiversity conservation efforts in several Colombian regions.

In the Amazon region, we participated in the restoration and protection project led by *Saving the Amazon*, supporting the economic and social development of Indigenous communities by planting 818 trees of native Amazonian species in the Great Yurí Indigenous Reservation in the Colombian department of Guainía. In partnership with the Altamira Estelar Hotel, the Colombian National Army and the Department's Environment and Risk Management Secretariat in the Colombian department of Tolima, we planted 400 trees in Ibagué to promote the recovery of strategic areas. In Casanare, Colombia, we made a considerable contribution by planting 70 trees in Yopal's Buenavista rural district, where we also installed a beekeeping system with five beehives, which is an environmental offsetting mechanism that drives the conservation of pollinators and strengthens the local economy, as it was handed over for the community to manage and develop it sustainably.

In the Colombian department of Valle del Cauca during the COP16, our employees participated in the ecological restoration of the tropical dry forest in Yanaconas, planting 100 tree species in collaboration with COTELCO Valle del Cauca and Fundación Amatea. This initiative underscores the importance of ecological connectivity and the resilience of this highly-threatened ecosystem.

INTEGRATION OF BIODIVERSITY INTO THE MANAGEMENT OF OUR PORTFOLIO

In 2024, the Holding Company carried out a range of activities centered on the implementation of biodiversity-based working frameworks with the purpose of strengthening the integration of nature into our corporate management and our strategic decision-making process. In this context, we have explored new approaches within the framework of the *Nature-related Financial Disclosures* (TNFD), whose objective is to optimize the identification, assessment and disclosure of risks and opportunities related to biodiversity, thus aligning our strategy with the emerging environmental standards.



Aerial fauna crossing build by Coviandina in Villavicencio, Meta, Colombia.

Furthermore, we participated in the pilot program created by ASOBANCARIA (Colombian Association of Banks and Financial Institutions). This program is a sector-based initiative centered on evaluating the impacts and dependencies of our operations on nature within the financial system. This exercise has contributed to the enhancement of our internal capabilities and to establishing guidelines for more sustainable management of the natural capital. In parallel, we are advancing in the Locate phase of the *Locate, Evaluate, Assess, Prepare* (LEAP) approach. This has enabled us to identify key areas of interaction between our operations and the ecosystems, thus facilitating a better understanding of the environmental impacts associated with our activities.

The results obtained from these exercises have enabled us to recognize that our indirect activities carried out by our investees produce significant indirect impacts on the ecosystem services, particularly in terms of GHG emissions, air pollution and water contamination. Processes like the exploration and generation of energy, as well as the manufacturing and use of materials such as steel, cement, concrete and asphalt, contribute to climate change and the alteration of the ecosystems. Similarly, in the agribusiness activities, we have identified adverse effects on the agricultural biodiversity stemming from the expanding monoculture practices, the intensive use of water and the application of agrochemicals, which can affect the stability of the ecosystems and the resilience of crops and plantations. In the infrastructure context, habitat fragmentation, waste production and the modifications to bodies of water represent environmental challenges that require the implementation of ecological mitigation and restoration.

[GRI 304-2]

These findings highlight the importance of maintaining our work on the integration of biodiversity into the planning and management of our investments and into our risk matrices.

The sustainability of our operations demands active commitment by the manufacturing sector, supported by the actions that we are already furthering to mitigate impacts, promote nature-based solutions and improve the resilience of the ecosystems where we operate.

DIALOG OF THE FINANCE SECTOR ABOUT BIODIVERSITY

In 2024, we participated actively in multiple forums and events about biodiversity and sustainability with the aim of reasserting our commitment to both the protection of the natural capital and sustainable development. These events have been essential in strengthening the dialog, the exchange of experiences and the identification of good practices between the private sector, academe and government actors, thus promoting the identification of challenges and opportunities related to biodiversity.

A key milestone was *Corficolombiana's 3rd Forum on Sustainability: climate change and the opportunities of biodiversity*. The event gathered local and international experts with the purpose of discussing climate mitigation and adaptation strategies, as well as the relevance of biodiversity for the economy. Regarding this forum, it is worth underscoring the importance of aligning our investments with sustainability criteria while making sure each project contributes to the conservation of strategic ecosystems and to the development of nature-based solutions.

Moreover, within the framework of the **COPI6 held in Cali**, we participated in the event titled "Partners for Nature: the private sector in action," which took place in the Humboldt House and included the involvement of Deloitte and other strategic actors. During the event, we explored leading practices in terms of sustainability and biodiversity, and we addressed the importance of integrating the natural capital in the corporate planning processes.

We also took part in events organized by the *Global Reporting Initiative* (GRI) and Standard & Poor's Global, which included the presentation of the Spanish translation of the Biodiversity Standard, a key breakthrough for the adoption of leading practices in the region's business sector. In the Event of the Colombian Business and Production Sector organized by the National Business Association of Colombia (ANDI), we fostered the discussion about environmental impact management and the need to structure more robust measurement frameworks for evaluating the interaction between biodiversity and economic activities.

These events have allowed consolidating biodiversity as a pillar of the corporate agenda, promoting the adoption of strategies that actively contribute to the restoration and conservation of ecosystems. As we continue delving into this dialog, we strive to create strategic partnerships that facilitate the integration of the natural capital into risk management, responsible investment and the design of innovative solutions centered on sustainability.